

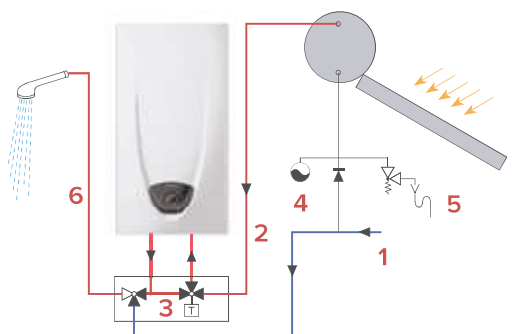


## THE OPEN CHAMBER GAS-FIRED INSTANT HOT WATER HEATER WITH OUTSTANDING COMFORT LEVEL

FAST EVO X combines easiness of installation and high comfort.

Thanks to its technology it can work even with very low water flow rate and low water pressure.

To ensure the maximum energy saving, Fast Evo X can be combined with a natural or forced circulation solar system through the dedicated solar mixing valve.



- |                      |                    |
|----------------------|--------------------|
| 1 Inlet cold water   | 4 Expansion vessel |
| 2 Pre-heated water   | 5 Relief valve     |
| 3 Thermostatic valve | 6 Outlet hot water |
| with by pass         |                    |

# FAST EVO X

NEW

EXTERNAL  
TEMPERATURE  
REGULATIONELECTRONIC  
TEMPERATURE  
MANAGEMENTSOLAR  
INTEGRATION

- / Low NOx: compliant with ErP 26/09/2018
- / Electronic detection of flame presence
- / Continuous flame modulation thanks to the NTC probe placed at the outlet of the exchanger
- / Minimum operating pressure 0.1 bar
- / Operation even with minimum flow rates of water up to 2 l / min
- / Presence of the water flow switch for accurate temperature control
- / Indoor installation

## ENERGY CLASS

A



## TECHNICAL DATA

11

14

Gas Category		11		14	
Type		II2H3P, II2H3B/P, II2E3B/P, II2E3P, II2H3+, II2E+3+, II2E+3P, II2E+3B/P, I2H, I2E, I2E+, I3P, I3B, I3B/P, I3+			
NOx emissions	mg/kWh	B11bs 46,5		B11bs 48,5	
Maximum heat input	kW	21,5		27	
Minimum heat input	kW	9,5		10,5	
Maximum heat output	kW	19,1		24	
Minimum heat output	kW	8,4		9,3	
Maximum nominal pressure	bar	10		10	
Minimum operating pressure	bar	0,1		0,1	
Minimum operating flow rate	l/min	2		2	
Flow rate with heat difference ( $\Delta t$ ) 25 °C	l/min	11		14	
Power supply	Battery	2 x 1,5V LR20		2 x 1,5V LR20	
Min/Max selectable temperature	°C	35-65		35-65	
Sound power	dB	60		64	
Minimum working ambient temperature	°C	5		5	
Overall dimension (HxWxD)	mm	580X310X210		580X370X210	
Weight	kg	9,6		11	

## DIMENSIONS

	mm	11	14
a	mm	40,8	72
b	mm	117	147,8
c	mm	234,1	264,6
d	mm	310	370
e	mm	25,8	22,8
f	mm	3	-
Ø	mm	113	132

## FAST EVO X

11

14



Energy class

A

A

Tapping profile

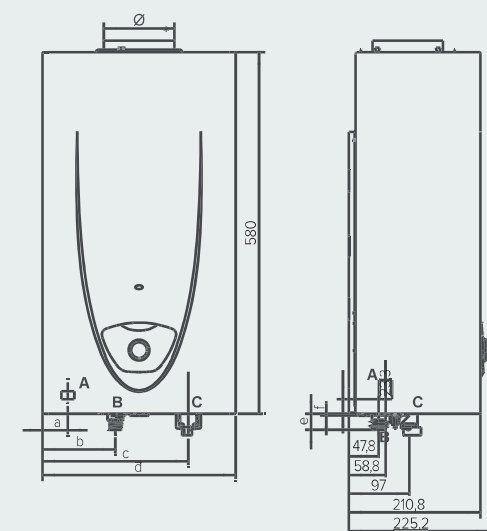
M

L

NG	3632387	3632389
GPL	3632388	3632390

## Gas Transformation kit

ONT GAS TRANSF LPG TO NG 11L LNX	3632486
ONT GAS TRANSF NG TO LPG 11L LNX	3632487
ONT GAS TRANSF LPG TO NG 14L LNX	3632489
ONT GAS TRANSF NG TO LPG 14L LNX	3632490



- A. Hot water outlet  
B. Gas inlet  
C. Cold water inlet